

REALLING **M**



**Integrated Science and technology
only for preeminence**

GVW: 5.1T - 5.3T
Cargo Bed Length : 10Ft - 14Ft



Fuel Saving



Dongfeng original D28 high-efficiency engine

Latest engine with **Isuzu** technology; adopting German **BOSCH** technology electric control VE pump, optimal combustion chamber's high-strength piston from Federal-Mogul corporation and ECU computer control, combining **Dongfeng Nissan** engine lightweight design and optimal combustion optimization technology to greatly reduce the fuel consumption.

Model: D-28, Displacement: 2771cc,
Horse Power: 100hp/3600rpm, Euro II.



Digital Information Display.

Having RPM, Temperature & Fuel gauges and Odometer
Attractive and latest technology.



G h a n d h a r a D F (P v t) L t d ...reliability on wheels

Safety



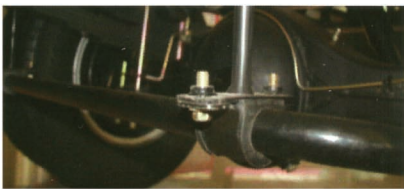
Brake Vacuum Tube

Equipped with brake vacuum tube; once engine fails to work, still assures five times, effective braking.



Pre-crash seatbelts

In any emergency seatbelt immediately tightens to firmly fix the drivers and passengers on the seats to avoid greater shock.



Stabilizer bar

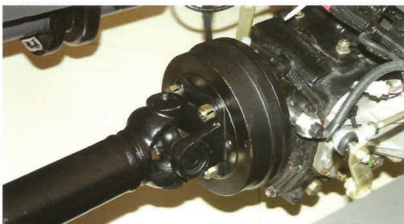
Equipped with anti-roll stabilizer bar to enhance the vehicle steering stability and safety.

Reliability



High-quality gearbox

Adopting Isuzu technology and technique and optimizing inter-gear combination flexibility, improving service life and reducing noise.



High-quality front & rear axles

Adopting Isuzu technology and technique, high-strength material and optimal design proposal to be more reliable.

Ghandhara DF (Pvt) Ltd.

Head Office: F-3, Hub Chowki Road, S.I.T.E, Karachi. UAN # 021-111-190-190, Tel: 021-32556901-10, Fax: 021-32556911-12
 Rawalpindi Office: Gammon House Plot no. 400/2 Peshawar Road, Rawalpindi. Ph: 051-5465742 Fax: 051-5465503
 Lahore Office: Chowk Al-Saeed, Nain Sukh, Sagiyan By Pass, Lahore. Ph: 042-37163931 Fax: 042-37163932
 Website : www.ghandharadf.com. Facebook Link : www.facebook.com/dongfengPakistan

Comfort



Ultra-spacious cab in accordance with ergonomics design: adjustable steering wheel, multifunctional comfortable seats, brand new streamline dashboard, multiple storage spaces, greater efficiency air conditioner and sunroof create car-like driving and riding experience.

Specification

Emission		EURO II
Model		Realling M
Model Code		E21-851
Wheel Base (mm)		3308
Engine	Make	DFLE
	Type	Turbo-charged & Intercooler, 4 Cylinder Diesel Engine
	Horse Power	100hp @ 3600rpm
	Torque	235Nm @ 2000rpm
	Displacement	2771cc
Transmission		5 Forward (Over Drive) & 1 Reverse
Vehicle Dimensions (mm)		5995 x 2090 x 2270
Cabin		Single Row, Reversible
Cargo Container Length (mm)		4172 mm / 14 feet
Frame (mm)		190
Front Axle (T)		2
Rear Axle (T)		4
Final Gear Ratio		5.375
Clutch Type & Size		Diaphragm spring, friction plate, 275mm
Brakes		Two Circuit, Oil Brakes, Front & Rear Drum Brake
Payload (Kg)		3,075
Curb Weight (Kg)		2,225
GVW (kg)		5,300
Tyre Size		7.00R16
Battery (V)		12Vx1
Air Conditioner		Optional
Power Steering		Standard

APPLICATIONS



The above mentioned parameters are only for your reference, please check real vehicle referring to actual equipment.